

Professional Activities Fund Annual Update 2021-22



THE UNIVERSITY
OF BRITISH COLUMBIA
Applied Science



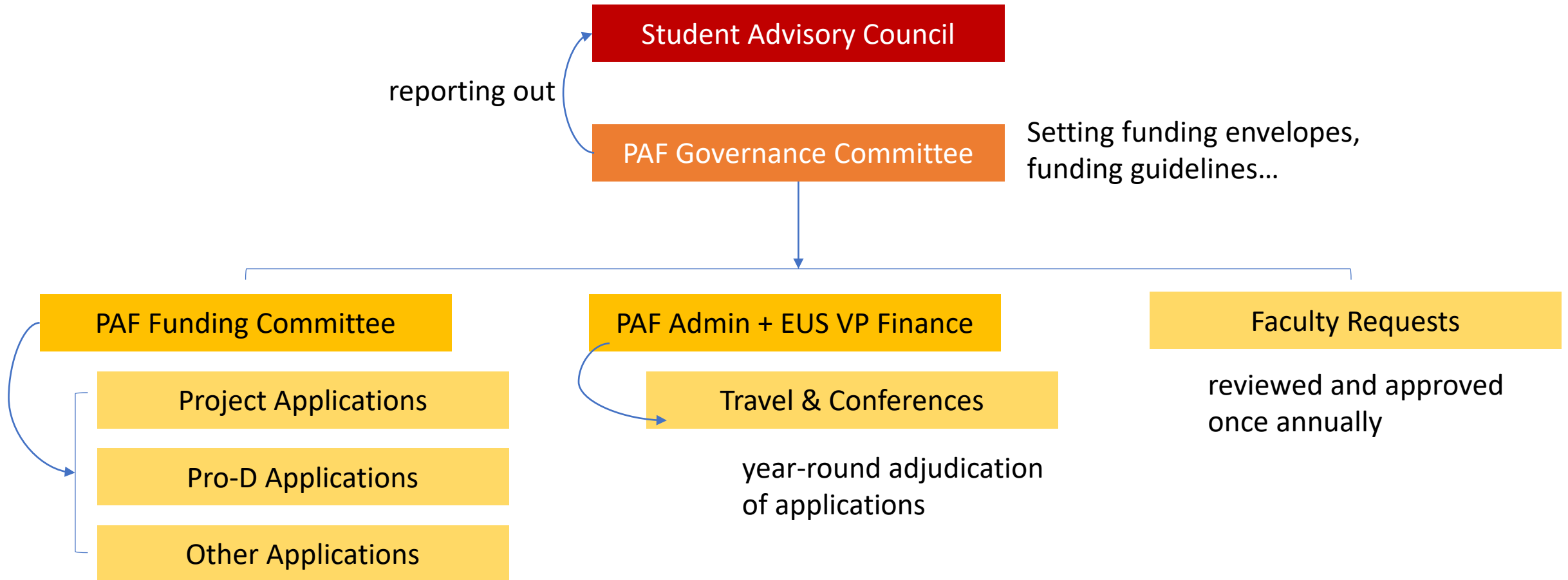
ENGINEERING
UNDERGRADUATE SOCIETY
UNIVERSITY OF BRITISH COLUMBIA

**Inclusive of PAF expenditures from September 2021 – Feb 2022*

WHAT IS PAF?

- Professional Activities Fund: “exists to enhance professional development activities through supporting **co-curricular** experiences”
 - projects, travel & conferences, student teams, PD events...
- \$100/student + CPI (inflation) – currently \$120.75
- Administered in joint by EUS & APSC

PAF ORGANIZATIONAL STRUCTURE



APSC PD supports the administration of the fund

- Our goal is to maximize spending for those who are paying into PAF while also trying to create a sustainable and relatively predictable fund with stable funding envelopes from year to year
- We have 4 student representatives and 4 Faculty members who adjudicate the applications based on the submission criteria (i.e., PAF Guidelines)

Updates to PAF for 2021-2022

- For Design Projects Funding – Faculty Advisors were expected to review and approve the project scope and budget before students submitted their applications.
- Deadline was extended from September 30th to October 15th to give students more time to complete the requirements for this year.
- APSC PD hosted PAF Q&A Sessions in September. Office hours were also held by the PAF Coordinator to help students with their applications in January, 2022.
- Removal of COVID-19 admin processes.

Effects of COVID-19 on PAF 2021-22

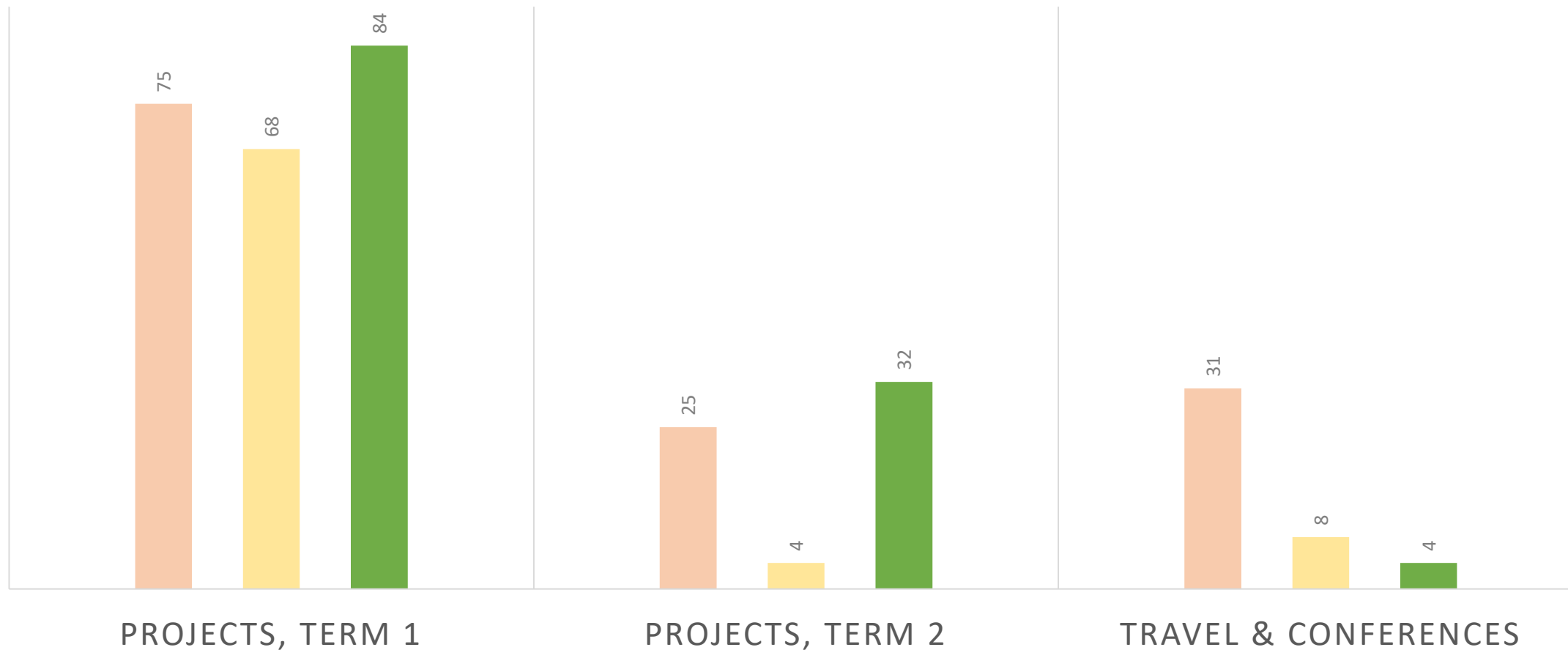
- International travel restrictions were in place for Term 1 and part of Term 2. Go Global approved travel, effective March 1, 2022.

Our PAF Account is very healthy!

PAF sources of income and expenses		2021-2022
Available PAF from student fees		\$509,000.00
Carryover from 2019/20 (unused funds)		\$125,441.52
Carryover from 2020/21 (unused funds)		\$213,285.86
Loan Repayment (final year) to APSC from 2018/19		-\$5,000.00
TOTAL		\$842,727.38

Number of Applications – Comparison

Applications Received 2019-2020 Applications Received 2020-2021 Applications Received 2021-2022



We're projecting a minimum carry-over of \$330,000 for the 2022-23 PAF cycle

		ENVELOPES	RAW Approved Asks (No scaling factor applied)	SCALED Project Asks (0% Scaling factor applied)	% USE
TERM 1	Travel & Conferences	\$80,000.00	\$10,200.00	\$10,200.00	13%
	Projects: Design Project		\$201,935.76	\$201,935.76	
	Projects: PD Opportunities		\$5,350.00	\$5,350.00	
	Projects: Other		\$10,268.59	\$10,268.59	
	Projects T1 TOTAL	\$217,554.34	\$217,554.34	\$217,554.34	100%
TERM 2	Projects: Design Project		\$31,524.60	\$31,524.60	
	Projects: PD Opportunities		\$-	\$-	
	Projects: Other		\$2,488.56	\$2,488.56	
	Projects T2 TOTAL	\$34,013.45*	\$14,799.58	\$14,799.58	100%
	Faculty Requests	\$169,500.00	\$169,500.00	\$169,500.00	100%
	Loan Repayment	\$5,000	\$5,000	\$5,000	100%
	Contingency Fund (Term 1/2)				
	TOTAL ALLOCATION	\$506,067.79	\$436,267.49	\$436,267.49	74%

** Term 2 has five projects that are pending approval.
Envelope will be readjusted to ensure they receive
100% funding if approved.*

PAF Challenges we're working to fix

- Quality of applications was lower due to inconsistent transfer of knowledge within EDT's this year have led to numerous rewrites.
- Issues with filling out the PAF Form: broken PivotTable tables due to usage of cloud platforms between members, incorrect distinctions between project categories.
- PAF Guidelines require more clarity about capital purchases.
- For next year, one of our major goals is to continue reevaluating and reducing the administrative load for students, staff and faculty

More students benefitted from and/or were involved in PAF this year!

- Students were given their entire funding request (100% of their ask!)
- 4 student representatives on both the PAF Funding and PAF Governance Committees (only 1 last year!)
- Insurance was purchased for Engineering design team members via the PAF Annual Faculty Request
- We're back to pre-COVID levels of applications

Questions?