

Professional Activities Fund Annual Update 2022-23



THE UNIVERSITY
OF BRITISH COLUMBIA
Applied Science



ENGINEERING
UNDERGRADUATE SOCIETY
UNIVERSITY OF BRITISH COLUMBIA

**Inclusive of PAF expenditures from September 2022 – Mar 2023*

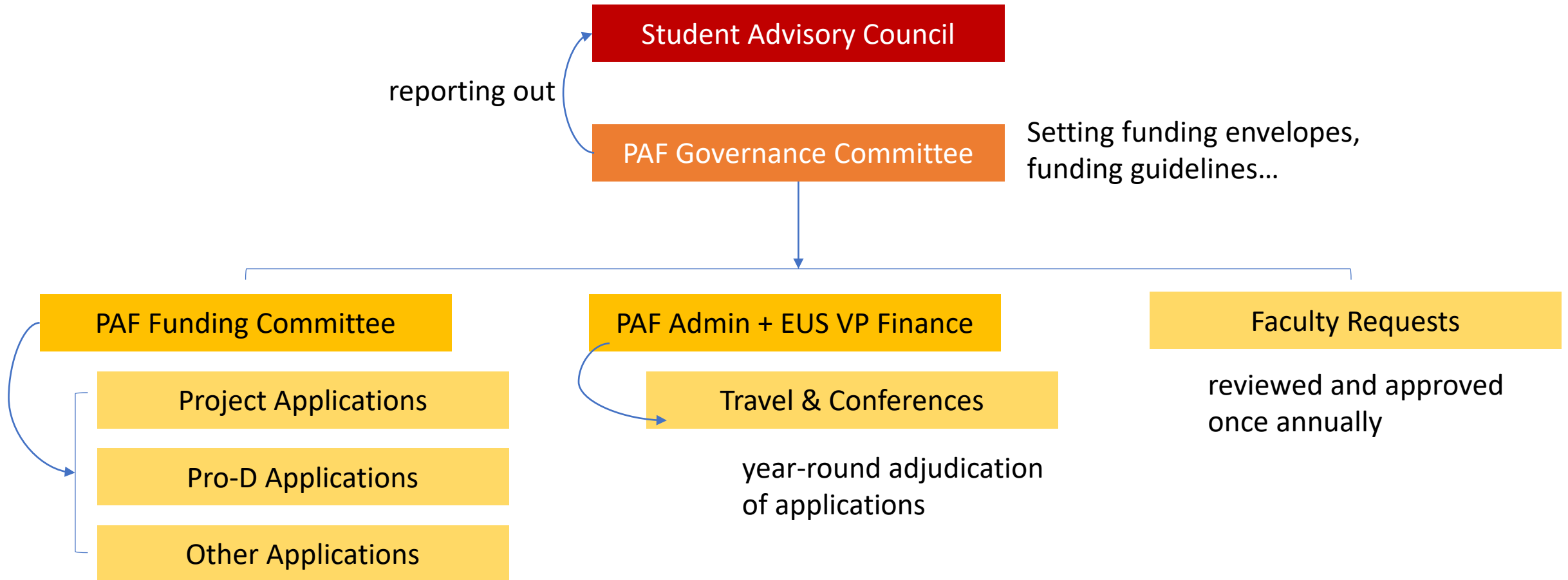
WHAT IS PAF?

- Professional Activities Fund

“exists to enhance professional development activities through supporting **co-curricular** experiences”

- projects, travel & conferences, student teams, PD events...
- \$100/student + CPI (inflation) – currently \$123.00
- Administered in joint by EUS & APSC

PAF ORGANIZATIONAL STRUCTURE



APSC PD supports the administration of the fund

- Our goal is to maximize spending for those who are paying into PAF while also trying to create a sustainable and relatively predictable fund with stable funding envelopes from year to year
- We have 3 student representatives and 2 Faculty members who adjudicate the applications based on the submission criteria (i.e., PAF Guidelines)

Updates to PAF for 2022-2023

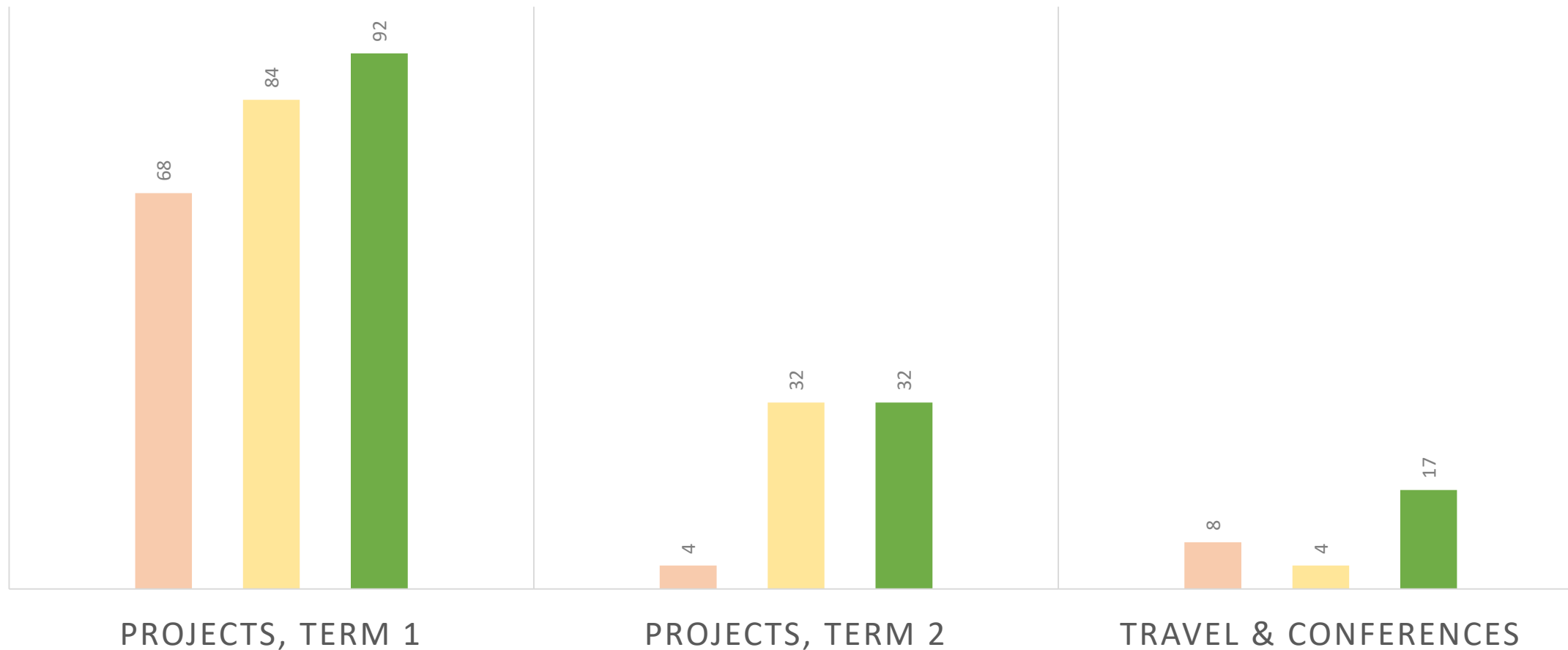
- Deadline was extended from September 30th to October 02nd to give students more time to complete the requirements for this year.
- APSC PD hosted PAF Q&A Sessions office hours in September.
- PAF Funding Committee did initial independent review for the applications.
 - Added clarification meetings for groups with resubmissions and rejections.

Our PAF Account is very healthy!

PAF sources of income and expenses		2022-2023
Available PAF from student fees		\$492,000.00
Carryover from 2020/21 (unused funds)		\$192,149.34
Carryover from 2021/22 (unused funds)		\$251,392.06
TOTAL		\$935,541.40

Number of Applications – Comparison

Applications Received 2020-2021 Applications Received 2021-2022 Applications Received 2022-2023



We're projecting a minimum carry-over of \$330,000 for the 2023-24 PAF cycle

		ENVELOPES	RAW Approved Asks (No scaling factor applied)	SCALED Project Asks (0% Scaling factor applied)	% USE
TERM 1	Travel & Conferences	\$80,000.00	\$22,194.68	\$22,194.68	28%
	Projects: Design Project		\$139,401.50	\$139,401.50	
	Projects: PD Opportunities		\$10,047.02	\$10,047.02	
	Projects: Other		-	-	
	Projects T1 TOTAL	\$149,448.52	\$149,448.52	\$149,448.52	100%
TERM 2	Projects: Design Project		\$92,512.87	\$92,512.87	
	Projects: PD Opportunities		1,612.00	1,612.00	
	Projects: Other		\$900.00	\$900.00	
	Projects T2 TOTAL	\$95,024.87	\$95,024.87*	\$95,024.87	100%
	Faculty Requests	\$167,500.00	\$167,500.00	\$167,500.00	100%
	Contingency Fund (Term 1/2)				
	TOTAL ALLOCATION	\$491,973.39	\$434,168.07	\$434,168.07	88%

** Term 2 has one project that is pending approval. Envelope will be readjusted to ensure they receive 100% funding if approved.*

PAF Challenges we're working to fix

- Revamping the PAF application for clarity (to align with guidelines and to distinguish it from SuperApp requirements)
- PAF Guidelines require more clarity about capital purchases
- Addressing the surplus
- For next year, one of our major goals is to continue reevaluating and reducing the administrative load for students, staff and faculty
- Ensuring a smoother transition between the student reps
 - Delayed PAF evaluations due to delay in getting student representatives

More students benefitted from and/or were involved in PAF this year!

- Students were given their entire funding request (100% of their ask!)
- Insurance was purchased for Engineering design team members via the PAF Annual Faculty Request
- Two storage containers are being purchased for Design Teams
- More applications for Travel and Conferences
- Reduced Funding Committee meeting by 7.5 hours (compared to 2021-22)

Program and Department Clubs have received PAF for...

- PD Opportunities like...Study nights
 - CHBE Study night, CHBE Dog Therapy (had a resources component)
- Alumni/Industry nights
 - MECH, MANU, IGEN
- Retreats/Field Trips
 - MANU field trip, Boeing Tour
- Travel and Conferences like...
 - Annual year trips or grad trips (!)
 - ECE, MECH, IGEN, MTRL
 - Conferences and Workshops
 - AiCHE Jeopardy, Diversity in Engineering, Sustainability, CFES
 - Competitions
 - World Mining Competition, Mining Games

Questions?