

# Professional Activities Fund Annual Update 2023-24



THE UNIVERSITY  
OF BRITISH COLUMBIA  
Applied Science



ENGINEERING  
UNDERGRADUATE SOCIETY  
UNIVERSITY OF BRITISH COLUMBIA

*\*Inclusive of PAF expenditures from September 2023 – Mar 2024*

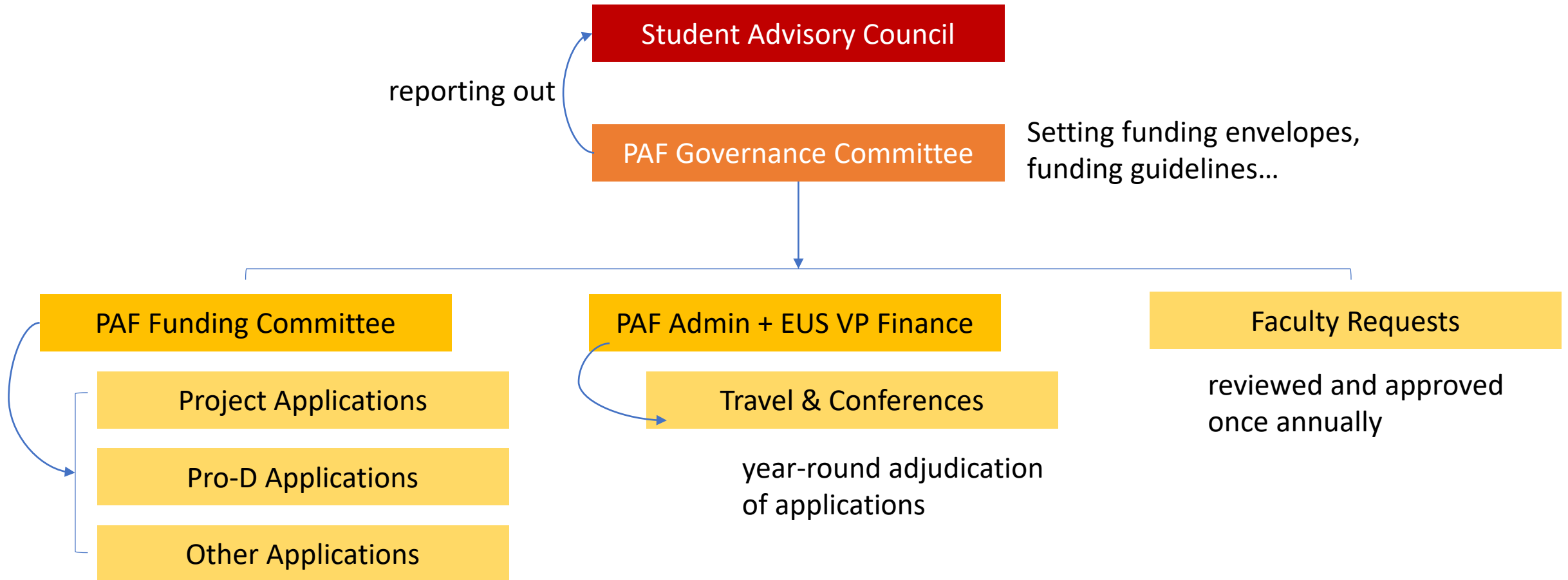
# WHAT IS PAF?

- Professional Activities Fund

“exists to enhance professional development activities through supporting **co-curricular** experiences”

- projects, travel & conferences, student teams, PD events...
- \$100/student + CPI (inflation) – currently \$127.75
- Administered in joint by EUS & APSC

# PAF ORGANIZATIONAL STRUCTURE



# APSC PD supports the administration of the fund

- Our goal is to maximize spending for those who are paying into PAF while also trying to create a sustainable and relatively predictable fund with stable funding envelopes from year to year
- We have 4 student representatives and 4 Faculty members who adjudicate the applications based on the submission criteria (i.e., PAF Guidelines)

# Requirements of SuperApp and PAF

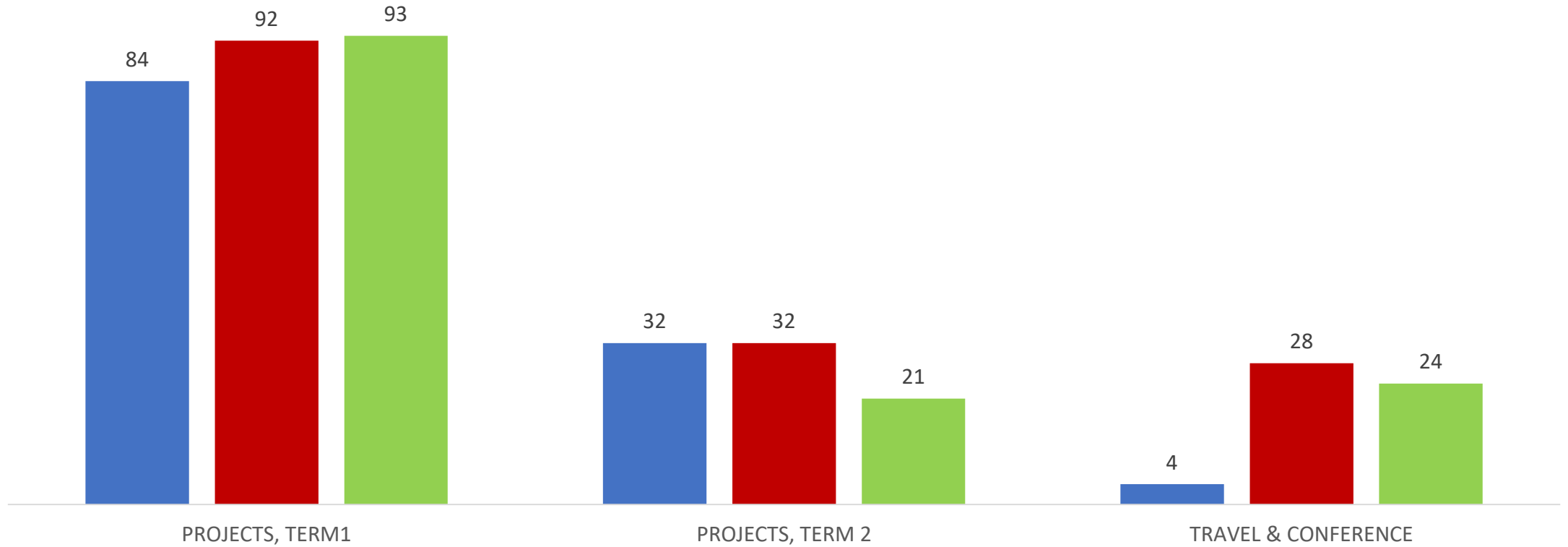


# Updates to PAF for 2023-2024

- PAF Funding Spreadsheet has undergone a major update including color coding and structure changes to make it easier for applicants to complete it
- APSC PD hosted PAF Q&A Sessions office hours 2-3 weeks before the submission deadlines (both terms)
- PAF Funding Committee adjudication process changed slightly
  - Independent review, preliminary, student clarification, resubmission.
- Increased the eligible funding amounts by approximately 14%
- New website!

# Number of Applications – Comparison

■ Applications Received 2021-2022 ■ Applications Received 2022-2023 ■ Applications Received 2023-2024



# More students benefitted from and/or were involved in PAF this year!

- Students were given their entire funding request (100% of their ask!)
- More applications for Travel and Conferences (24 and counting!)
- More funding released to students - over 100K compared to 2022/23
- 89% Application approval rate (66% for 2022/23)



# Our PAF Account is very healthy!

PAF sources of income and expenses		2023-2024
Available PAF from student fees		\$525,000.00
Carryover from previous years		\$531,678.00
<b>TOTAL</b>		<b>\$1,056,678.00</b>

We're projecting to spend approximately 50k more than what we are receiving in fees

		ENVELOPES	RAW Approved Asks (No scaling factor applied)	SCALED Project Asks (0% Scaling factor applied)	% USE
TERM 1	Travel & Conferences	\$110,000.00	\$62,445.29	\$62,445.29	57%
	Projects: Design Project		\$280,572.92	\$280,572.92	
	Projects: PD Opportunities		\$27,152.11	\$27,152.11	
	Projects: Other		-	-	
	<b>Projects T1 TOTAL</b>	<b>\$307,752.03</b>	<b>\$307,752.03</b>	<b>\$307,752.03</b>	100%
TERM 2	Projects: Design Project		\$16,887.09	\$16,887.09	
	Projects: PD Opportunities		\$10,841.48	\$10,841.48	
	Projects: Other		\$3,260.50	\$3,260.50	
	<b>Projects T2 TOTAL</b>	<b>\$30,989.07</b>	<b>\$30,989.07</b>	<b>\$30,989.07</b>	100%
	Faculty Requests	\$159,500.00	\$159,500.00	\$159,500.00	100%
	Contingency Fund (Term 1/2)				
	<b>TOTAL ALLOCATION</b>	<b>\$608,214.10</b>	<b>\$560,659.39</b>	<b>\$560,659.39</b>	<b>92%</b>

# PAF Challenges we're working to fix

- Communicate the difference between SuperApp and PAF application for clarity
- PAF Guidelines require more clarity about capital purchases and consumables
- Working with the PAF Governance Committee to reduce the carryover in a sustainable way (i.e., so that future years are not affected)
- Similarly to last year, one of our major goals is to continue reevaluating and reducing the administrative load for students, staff and faculty

# Program and Department Clubs have received PAF for...

- 26 approved PD Opportunities
  - Industry/Alumni night
    - SBME, CHBE, IGEN, GEOE, ASCE, Envision AICHE
- 6 approved Travel and Conferences
  - PD registration fee
    - MINE First Aid
  - Conferences and Workshops
    - MINE, ASCE
  - Competitions
    - Mining Games, ITE Student Chapter

# Other Facts and Figures

- E-IDEAS Affinity Group – 2 approved applications
  - PD Opportunities
    - Networking Event by WiE
  - Travel and Conferences
    - Conference by G&Q
- Other Projects – 5 approved applications
  - Program club: EWB

Questions?