

# Professional Activities Fund Annual Update 2024-25



THE UNIVERSITY  
OF BRITISH COLUMBIA  
Applied Science



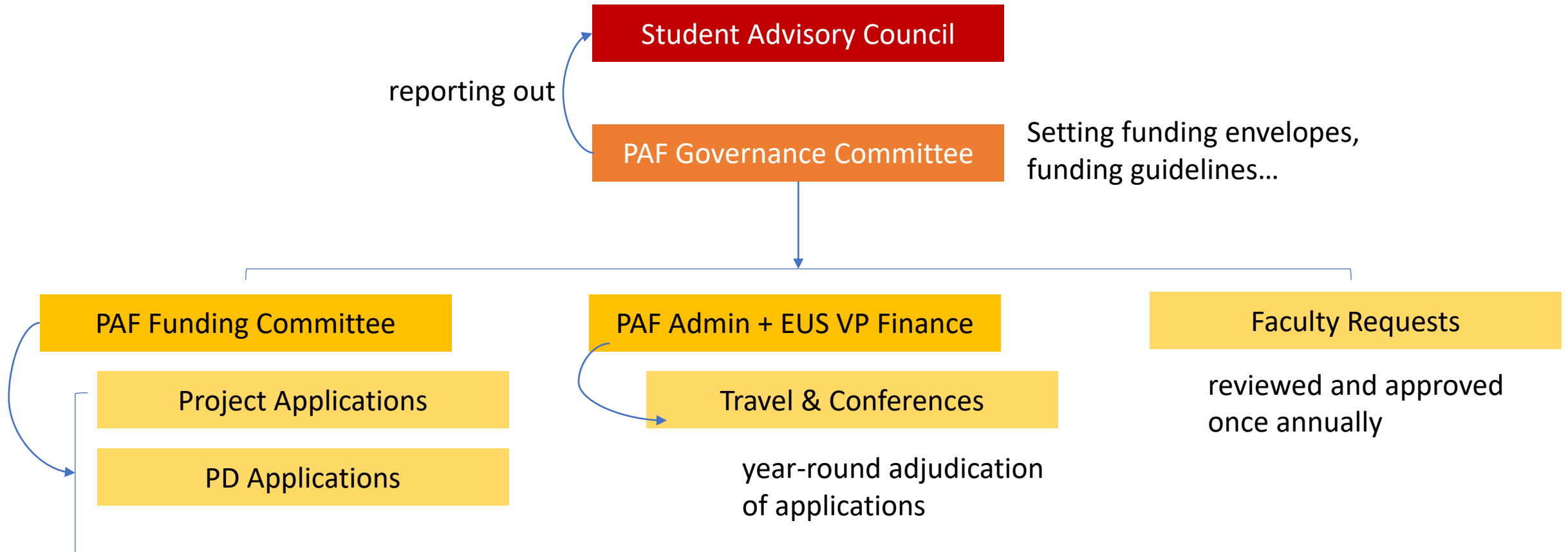
ENGINEERING  
UNDERGRADUATE SOCIETY  
UNIVERSITY OF BRITISH COLUMBIA

*\*Inclusive of PAF expenditures from September 2024 – Mar 2025*

# WHAT IS PAF?

- Professional Activities Fund
  - “exists to enhance professional development activities through supporting **co-curricular** experiences”
  - projects, travel & conferences, student teams, PD events...
- \$100/student + CPI (inflation) – currently \$130.25
- Administered in joint by EUS & APSC

# PAF ORGANIZATIONAL STRUCTURE



# APSC PD supports the administration of the fund

- Our goal is to maximize spending for those who are paying into PAF while also trying to create a sustainable and relatively predictable fund with stable funding envelopes from year to year
- We have 4 student representatives and 4 Faculty members who adjudicate the applications based on the submission criteria (i.e., PAF Guidelines)

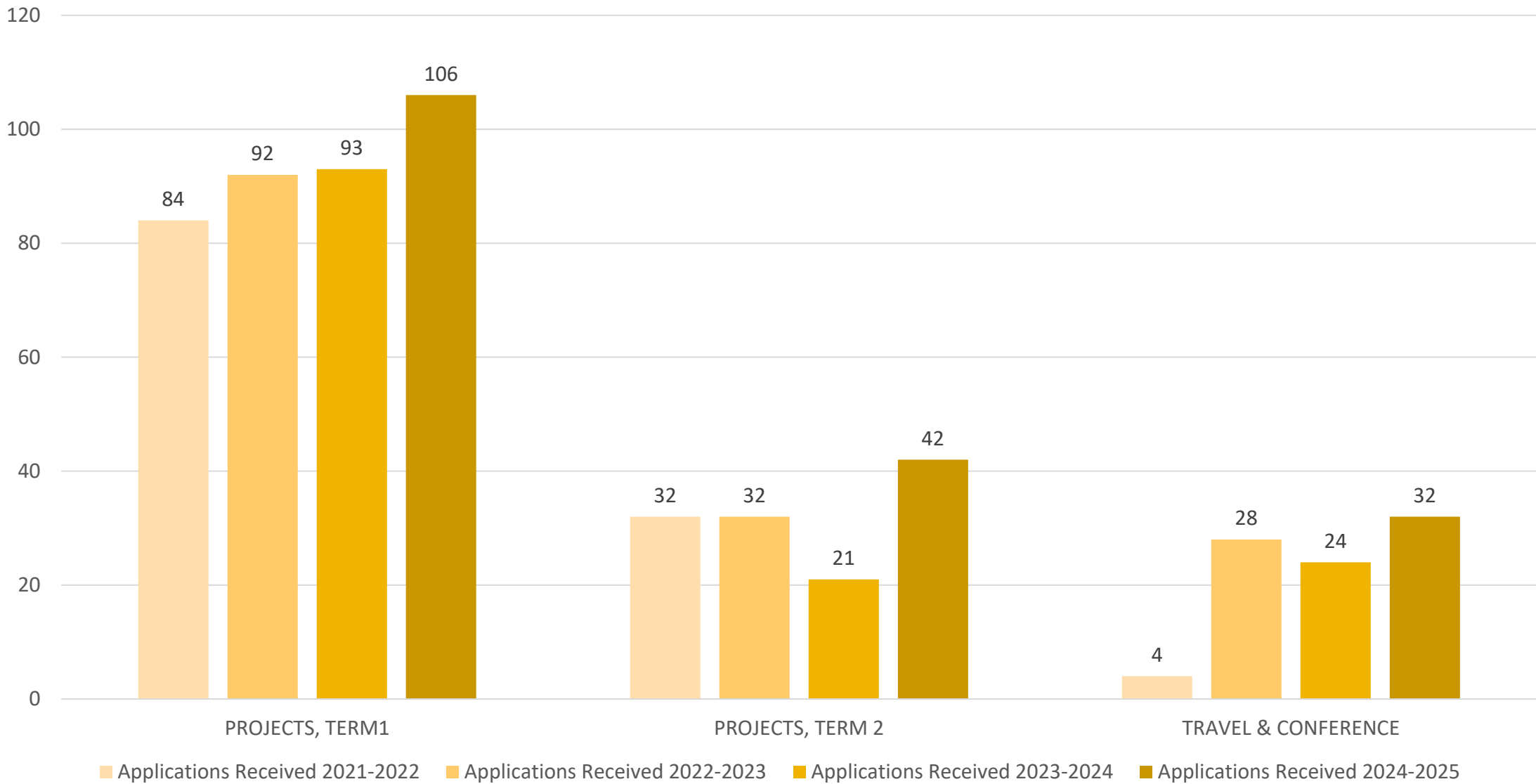
# Requirements of SuperApp and PAF



# Updates to PAF for 2024-2025

- PAF Funding Spreadsheet has undergone a major update including updated formulas, color coding and structure changes to make it easier for applicants to complete it
- APSC PD has removed the “Other” category and there is only Project, PD Opportunities and Travel and Conference categories now
- Funding spreadsheets were required to be locked before PAF submission
- PAF Guidelines was changed to “PAF Mandate”
- APSC PD hosted PAF Q&A Sessions office hours 2-3 weeks before the submission deadlines (both terms)
- PAF Funding Committee adjudication process changed slightly for Term 2
  - Independent review, preliminary, student clarification, resubmission.

# Number of Applications – Comparison



# More students benefitted from and/or were involved in PAF this year!

- Students were given their entire funding request (100% of their ask!)
- More applications for Travel and Conferences (32 and counting!)
- More funding released to students - \$605,554.16 released in total
- 73% Application approval rate overall (but 90.48% for Term 2)



# Our PAF Account is very healthy!

PAF sources of income and expenses		2024-2025
Available PAF from student fees		\$593,000.00
Carryover from previous years		\$487,198.98
TOTAL		\$1,080,198.98

# We're projecting to spend approximately 12k more than what we are receiving in fees

	ENVELOPES	RAW Approved Asks (No scaling factor applied)	SCALED Project Asks (Scaling factor applied)	% USE
	Travel & Conferences	\$ 123,000.00	\$ 83,662.10	68.02%
TERM 1	Projects: Design Project	\$ 221,285.14	\$ 221,285.14	
	Projects: PD Opportunities	\$ 32,218.49	\$ 32,218.49	
	Projects: Other	\$ -	\$ -	
	Projects T1 TOTAL	\$ 253,503.63	\$ 253,503.63	100.00%
TERM 2	Projects: Design Project	\$ 99,860.63	\$ 99,860.63	
	Projects: PD Opportunities	\$ 5,402.81	\$ 5,402.81	
	Projects: Other	\$ -	\$ -	
	Projects T2 TOTAL	\$ 105,263.44	\$ 105,263.44	100.00%
	Faculty Requests	\$ 163,125.00	\$ 163,125.00	100.00%
	Contingency Fund (Term 1/2)			
	TOTAL ALLOCATION	\$ 644,892.07	\$ 605,554.16	94%
SCALE: 1				

# PAF Challenges we're working to fix

- PAF Mandate require more clarity about what is considered capital purchases and consumables
- Applications with unlocked spreadsheets or using the wrong spreadsheet template
- A formal appeal process for applicants
- Working with the PAF Governance Committee to reduce the carryover in a sustainable way (i.e., so that future years are not affected)
- Similarly to last year, one of our major goals is to continue reevaluating and reducing the administrative load for students, staff and faculty

# Program and Department Clubs and Professional Chapters have received PAF for...

- 27 approved PD Opportunities
  - ENVE, GEOE, CHBE, BME, ECE, Innovation on Board, ASCE, ITE, Engineers Without Borders
- 11 approved Travel and Conferences
  - PD registration fee
    - BCIT WELD 102 Course
  - Conferences and Workshops
    - MINE, CHBE, ECE, SBME, Mine Rescue
  - Competitions
    - Mining Games, MUGS

Questions?